

**ASTEKNİK**  
**VALVE**

[asteknikvana.com](http://asteknikvana.com)



## ABOUT US

Since 1976 the group has served in infrastructure market in Bursa and entered to valve manufacturing business by producing the first Asteknik brand butterfly valve in 1985. At the present time besides butterfly valves, check valves, dismantling joints, knife gate valves and elastomer gaskets are in the product portfolio. All these valves are produced in our factory located in Mustafakemalpaşa – Bursa in 13000 m2 closed area.

## OUR VISION

To provide our customers with products that can compete in the world market at economical costs and international quality standards. To show maximum care in the protection of the environment, occupational health and safety. To be in a respectful and level relationship with our competitors. To be a reliable business partner for our suppliers as well as our internal and external customers. Sustainable financial success and remaining a competitive business partner for our customers. To work with all of our employees with the awareness of continuous improvement.

## MISSION

As a global supplier of Butterfly Valves in the infrastructure and installation sector, our mission is to meet the needs and expectations of our customers with market-oriented, innovative designs/solutions, and to add value to all our stakeholders with sustainable financial success.







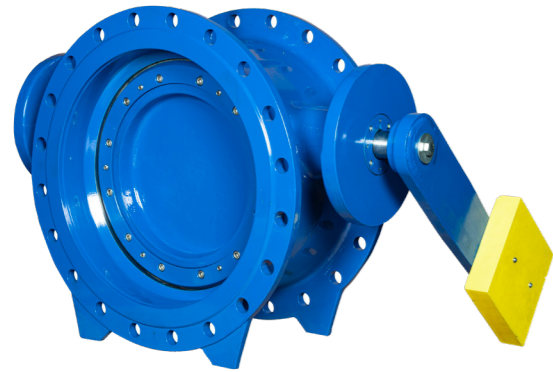




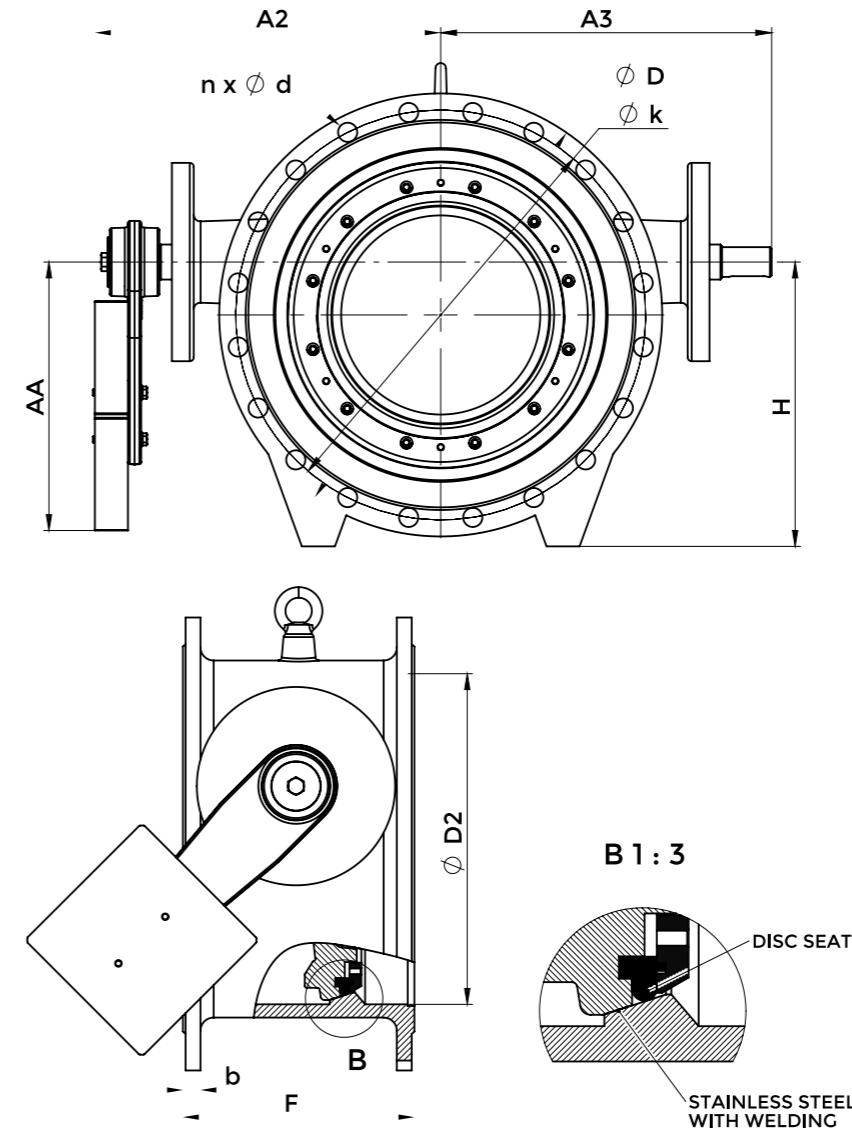
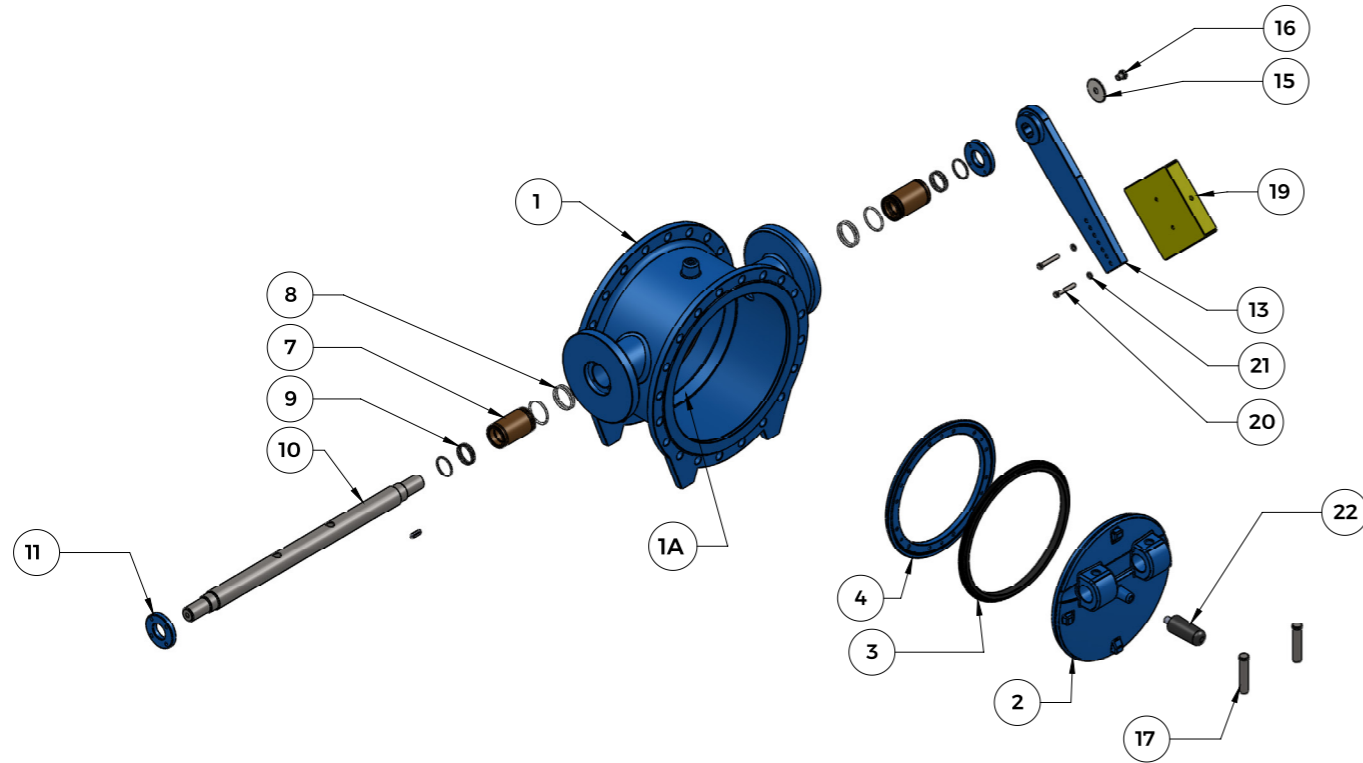
# 4010

## DOUBLE FLANGED TILTING CHECK VALVE

Type 4010 is a double flanged, double eccentric check valve as per EN 16767. As a standard execution it is supplied with counter weights. Hydraulic damping systems are also available to prevent water hammers especially at parallel running pump applications.



- Asteknik Valve Type : 4010
- Valve Type : Tilting Check Valve
- DN/NPS : DN 100 – DN 2000 / 4" – 80"
- Flange Connection : PN 10, PN 16, PN 25, CL 150
- Top Flange : ISO 5211
- Labeling : EN 19
- Norm : EN 558 Serie 14
- Test Standard : EN 12266-1



### DN 100 - 2000

P.NO	PART NAME	MATERIAL
1	Body	GCG 40-50
1A	Body Seat	Stainless Steel With Welding
2	Disc	GCG 40-50
3	Disc Seat	EPDM-NBR
4	Retaining Ring	St 37,AISI 304, AISI 316
5	Bolt	A2
6	Setscrew	A2
7	Front - Back Bushing	G-SnBz10 (Bronze), Delrin
8	O-ring	NBR
9	O-ring	NBR
10	Shaft	AISI 420
11	Front - Back Cover	St 37

P.NO	PART NAME	MATERIAL
12	Bolt	8.8
13	Lever	GCG 50
14	Setscrew	8.8
15	Washer	Ç 1050
16	Bolt	8.8
17	Pin	1.4021
18	Cutter Pin	A2
19	Weight	St 37
20	Bolt	8.8
21	Washer	8.8
22	Stoper	EPDM
23	Eye Bolt	A 105

PN - 10 Flange								PN - 16 Flange					BODY				
DN	b	ØD	ØD2	Ød	Øk	n	b	ØD	ØD2	Ød	Øk	n	AA	A2	A3	F	H
100	19	220	115	19	180	8	19	220	115	19	180	8	156	191	176	190	134
125	19	250	135	19	210	8	19	250	135	19	210	8	173	197	187	200	158
150	19	285	170	22	240	8	19	285	170	22	240	8	190	248	231	210	188
200	20	361	200	23	295	8	20	361	200	23	295	12	230	260	237	230	230
250	22	395	250	23	350	12	22	405	250	28	355	12	255	321	310	250	280
300	24.5	445	300	22	400	12	24.5	460	300	28	410	12	265	415	390	270	300
350	24.5	505	350	23	460	16	26.5	505	350	28	470	16	368	420	410	290	315
400	24.5	565	400	26	515	16	28	580	400	30	525	16	330	458	435	310	355
450	25.5	615	450	26	565	20	30	640	450	30	585	20	345	590	555	330	380
500	26.5	670	500	26	620	20	31.5	715	500	33	650	20	478	546	501	350	430
600	30	780	600	30	725	20	36	840	600	36	770	20	460	683	662	390	520
700	32.5	895	700	30	840	24	39.5	910	700	36	840	24	532	784	764	430	610
800	35	1015	800	33	950	24	43	1025	800	40	950	24	590	830	810	470	720
900	37.5	1115	900	33	1050	28	46.5	1125	900	39	1050	28	725	852	836	510	693
1000	40	1230	1000	36	1160	28	50	1255	1000	42	1170	28	1000	900	885	550	750
1200	45	1455	1200	40	1380	32	57	1485	1200	49	1390	32	1030	1025	1010	630	1044
1400	46	1675	1400	43	1590	36	60	1685	1400	49	1590	36	1080	1180	1160	710	1220
1600	49	1915	1600	49	1820	40	65	1930	1600	56	1820	40	1110	1310	1300	790	1280
2000	55	2325	2000	49	2230	48	75	2345	2000	62	2230	48	1176	1610	1600	950	1586



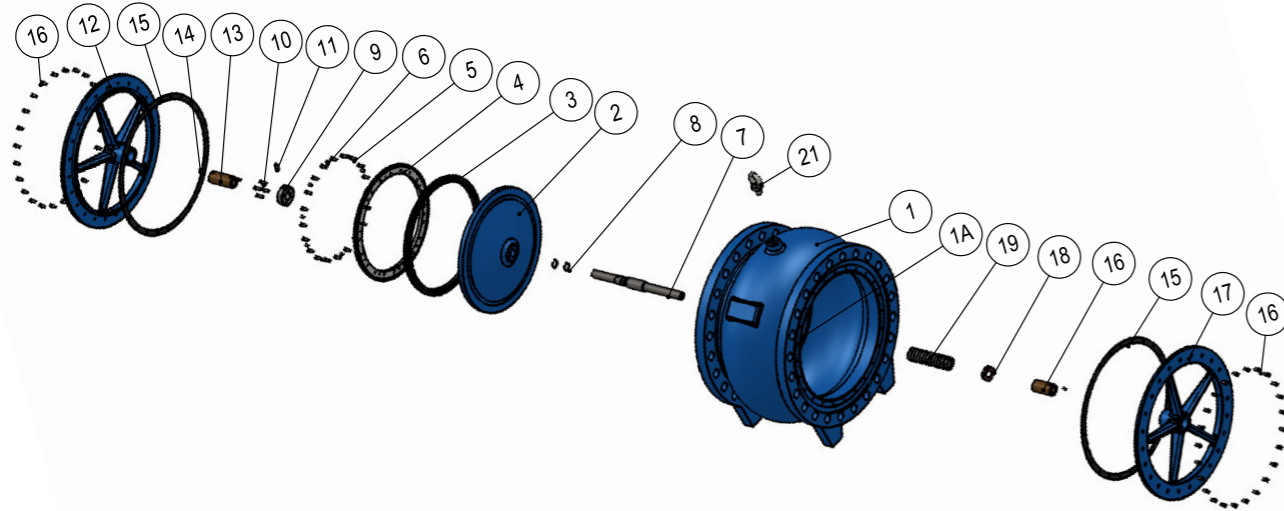
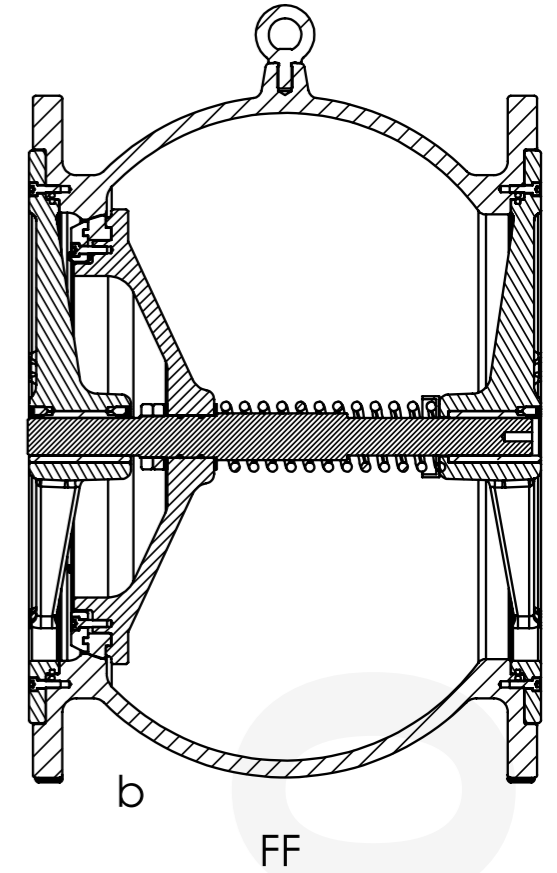
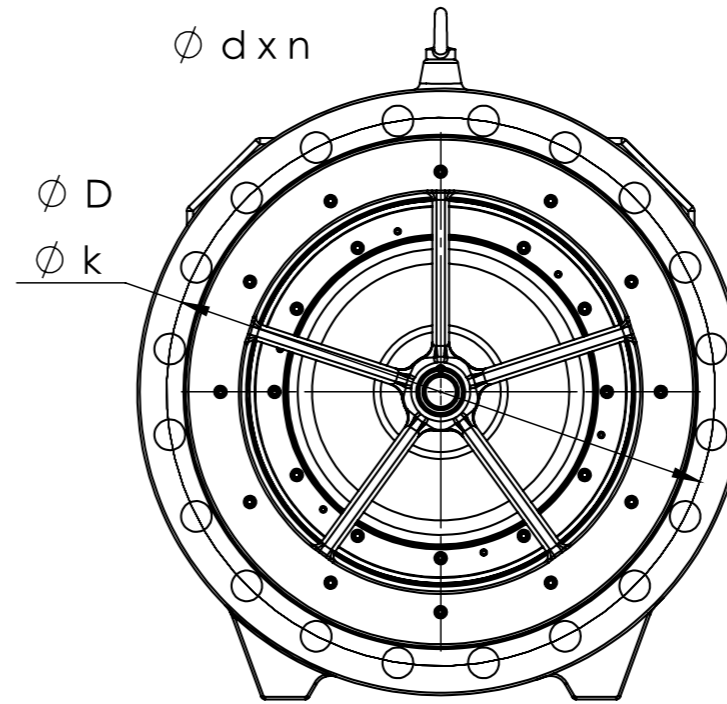
# 4600

CHECK VALVE

Type 4600 is a double flanged silent check valve. Thanks to its spring assisted disc, it closes rapidly and silently before occurrence of water hammer.



- Asteknik Valve Type : 4600
- Valve Type : Check Valve
- DN/NPS : DN 125 - DN 1200 (14" - 32")
- Flange Connection : PN 10, PN 16, PN 25, PN 40
- Top Flange : ISO 5211
- Labeling : EN 19
- Norm : EN 558 Serie 8
- Test Standard : EN 12266-1



## DN 125 - 1200

P.NO	PART NAME	MATERIAL
1	Body	GGG 50
1A	Body Seat	Stainless Steel With Welding
2	Disc	GGG 50
3	Seat	EPDM
4	Retaining Ring	St 37
5	Bolt	A2
6	Setscrew	A2
7	Shaft	1.4021
8	O-ring	EPDM
9	Fixing Ring	1.4021
10	Bolt	A2
11	Front - Back Cover	St 37

P.NO	PART NAME	MATERIAL
11	Setscrew	A2
12	Front Difuzor	GGG 50
13	Front Bushing	Bronze
14	Setscrew	A2
15	Gasket	EPDM ACS
16	Bolt	A2
17	Back Difuzor	GGG 50
18	Back Bushing	Bronze
19	Spring	Stainless Steel
20	Spring Bushing	Bronze
21	Eye Bolt	A 105

DN	PN - 10					PN - 16					BODY
	b	ØD	Ød	Øk	n	b	ØD	Ød	Øk	n	F-F
125	19	250	19	210	8	19	250	19	210	8	200
150	19	285	23	240	8	19	285	23	240	8	225
200	20	340	23	295	8	20	340	23	295	12	275
250	22	395	23	350	12	22	405	28	355	12	325
300	24,5	445	23	400	12	24,5	460	28	410	12	375
350	24,5	505	23	460	16	26,5	520	28	470	16	425
400	24,5	565	28	515	16	28	580	31	525	16	475
450	25,5	615	28	565	20	30	640	31	585	20	500
500	26,5	670	28	620	20	31,5	715	34	650	20	550
600	30	780	31	725	20	36	840	37	770	20	600
700	32,5	895	31	840	24	39,5	910	37	840	24	650
800	35	1015	34	950	24	43	1025	40	950	24	700
900	37,5	1115	34	1050	28	46,5	1125	40	1050	28	800
1000	40	1230	37	1160	28	50	1255	44	1170	28	900
1200	45	1455	40	1380	32	57	1485	60	1390	32	900

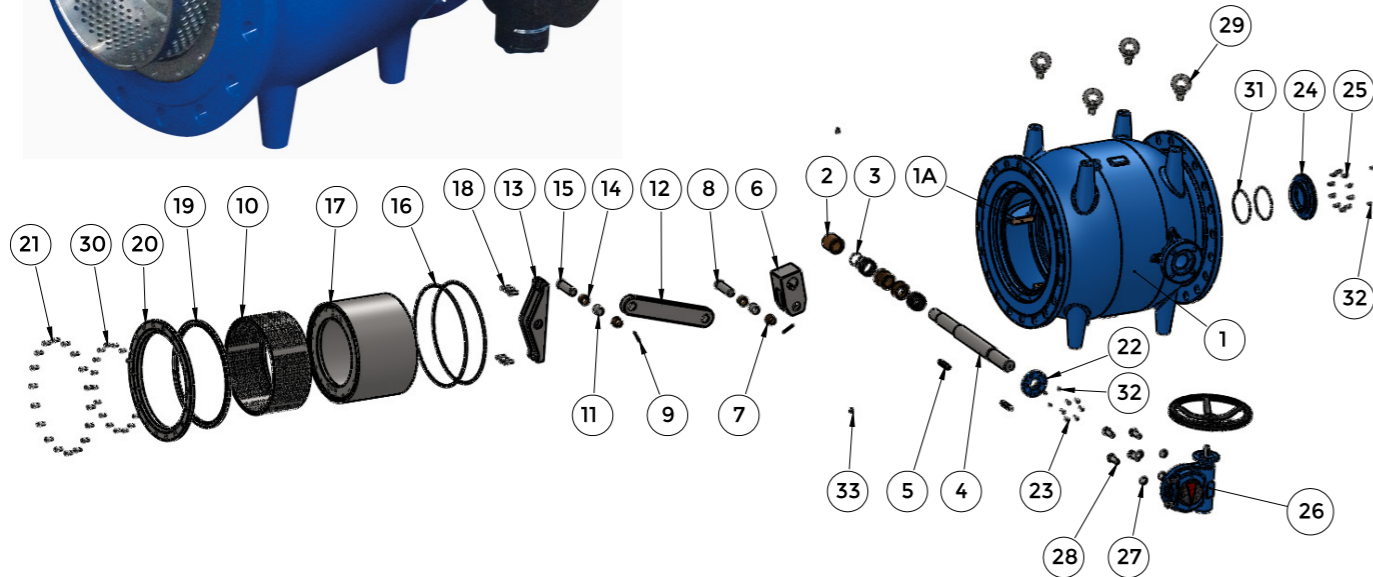
# 6000

## NEEDLE VALVE

Needle (plunger) valves are widely used in flow regulating or pressure control applications. Due to its special inner structure, flow cross section is always circular and it allows for precise control. Flow is always guided to the center of the pipe axis where bubbles form and recover without damaging the equipments in the line. Upstream and downstreams pressure and require flow rate defines the type of cavitation ring to be used. It is strongly recommended to have 10 x DN straight line upstream and downstream of the needle valve. Needle valves can be manual operated electric actuated (on/off or modulating), hydraulic operated with counter weight depending on the application needs.



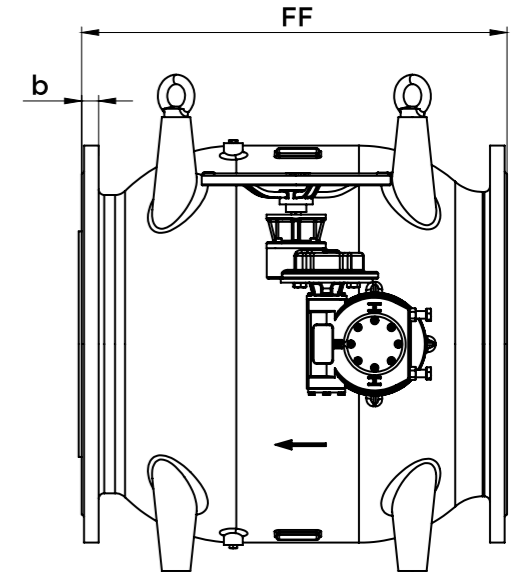
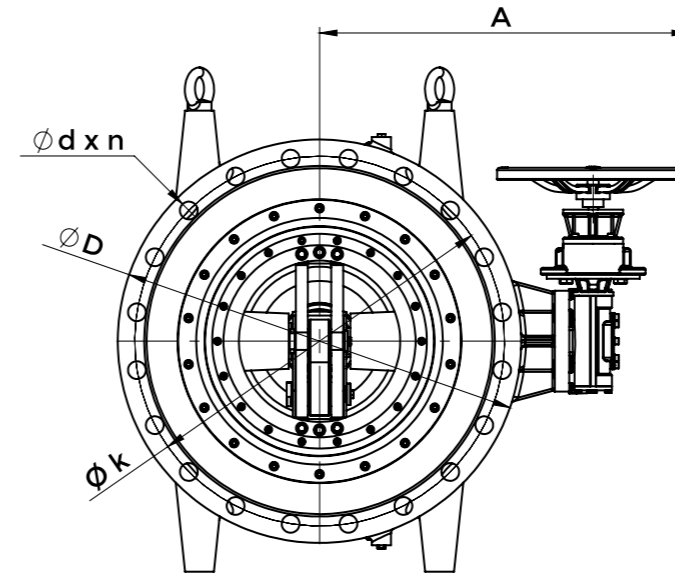
- Asteknik Valve Type : 6000
- Valve Type : Needle Valve
- DN/NPS : DN 150- DN 1200 (6" - 48")
- Flange Connection : PN 10, PN 16, PN 25
- Top Flange : ISO 5211
- Labeling : EN 19
- Test Standard : EN 12266-1



### DN 150 - 1200

P.NO	PART NAME	MATERIAL
1	BODY	EN CJS 400 15
1A	PISTON GUIDE RAILS	BRONZE WELDING
2	BUSHING	BRONZE
3	O-RING	EPDM
4	SHAFT	STAINLESS STEEL 1.4021
5	KEY	STAINLESS STEEL 1.4021
6	CRANK	STAINLESS STEEL AISI 304
7	BUSHING	BRONZE
8	PIN	STAINLESS STEEL 1.4021
9	COTTER PIN	A2
10	CAVITATION RING	STAINLESS STEEL AISI 304
11	BUSHING	STAINLESS STEEL AISI 304
12	PUSH ROD	STAINLESS STEEL AISI 304
13	PISTON ROD	STAINLESS STEEL AISI 304
14	BUSHING	BRONZE
15	PIN	STAINLESS STEEL 1.4021
16	O-RING	EPDM

P.NO	PART NAME	MATERIAL
17	PISTON	STAINLESS STEEL AISI 304
18	BOLT	A2
19	SEALING RING	EPDM
20	RETAINING RING	A2
21	BOLT	A2
22	COVER	Ç1050
23	BOLT	8.8
24	COVER	Ç1050
25	BOLT	A2
26	GEAR BOX	-
27	WASHER	8.8
28	BOLT	8.8
29	EYE BOLT	A105
30	BOLT	A2
31	O-RING	EPDM
32	SETScrew	A2
33	PLUG	A2



DN	PN	ØD	Øk	Ød	n	b	A	FF	Weight (Kg)
150	10	285	240	23	8	20	355	350	65
200	10	340	295	23	8	20	375	400	86
300	10	460	400	23	12	24,5	445	500	150
400	10	565	515	28	16	24,5	660	600	365
500	10	670	620	28	20	26,5	725	750	593
600	10	780	725	31	20	30	770	900	1010
700	10	895	840	31	24	32,5	915	1050	1565
800	10	1015	950	34	24	35	915	1200	2020
900	10	1115	1050	34	28	37,5	995	1350	2615
1000	10	1230	1160	37	28	40	1190	1500	3685
1200	10	1455	1380	41	32	45	1360	1800	6120
150	16	285	240	23	8	20	355	350	65
200	16	340	295	23	12	20	375	400	86
300	16	460	410	28	12	24,5	445	500	150
400	16	580	525	31	16	28	660	600	370
500	16	715	650	34	20	31,5	725	750	615
600	16	840	770	37	20	36	770	900	1050
700	16	910	840	37	24	39,5	915	1050	1580
800	16	1025	950	41	24	43	915	1200	2030
900	16	1125	1050	41	28	46,5	995	1350	2630
1000	16	1255	1170	44	28	50	1190	1500	3720
1200	16	1485	1390	50	32	57	1360	1800	6180
150	CL 150	285	241,3	23	8	20	355	350	65
200	25	360	310	28	12	22	375	400	88
300	25	485	430	31	16	27,5	445	500	156
400	25	620	550	37	16	32	660	600	386
500	25	730	660	37	20	36,5	725	750	625
600	25	845	770	41	20	42	770	900	1055
700	25	960	875	44	24	46,5	915	1050	1630
800	25	1085	990	50	24	51	915	1200	1505
900	25	1185	1090	50	28	55,5	995	1350	2720
1000	25	1320	1210	57	28	60	1190	1500	3840
1200	25	1530	1420	57	32	69	1360	1800	6295

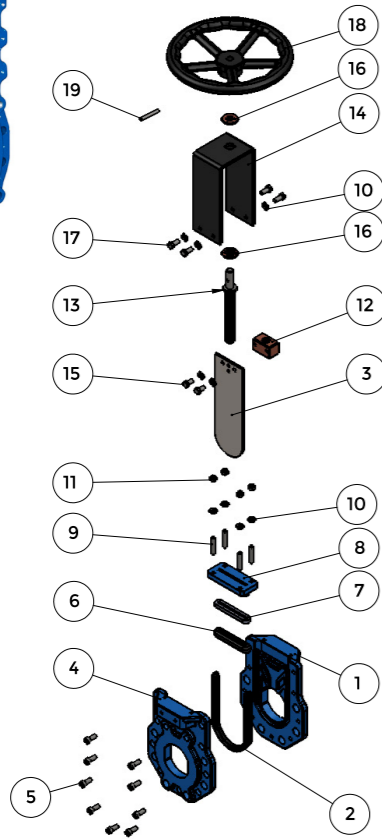


# 7300

BI-DIRECTIONAL  
KNIFE GATE VALVE

Type 7300 is a bi-directional valve to be used for fibrous fluids such as water treatment. Tightness is assured with the elastomer (EPDM, NBR, NR) seal in both flow directions. Actuation types are with gear box, handwheel, chainwheel and pneumatic or electrical. It has rising and non-rising stem alternatives. Can be used as shut-off valve.

Asteknik Valve Type : 7300  
 Valve Type : Knife Gate Valve  
 DN/NPS : DN 50 – DN1200 / 2" – 48"  
 Flange Connection : PN 10, PN 16  
 Operating Pressure : 4-6 Bars  
 Flange standard : EN 558-Serie 20  
 Test Standard : EN 12266-1

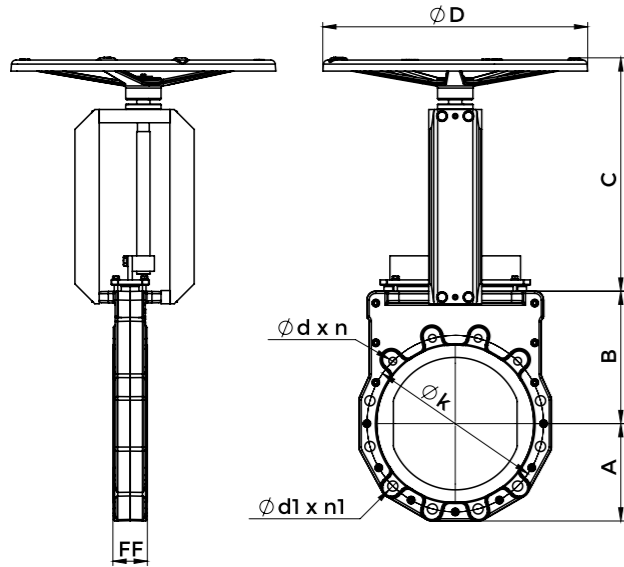


### DN50 - DN1200

P.NO	PART NAME	MATERIAL
1	Sledge Body	GGG 40-50, AISI 304, AISI 316
2	Seat	EPDM, NBR
3	Knife	AISI 304, AISI 316
4	Cover Body	GGG 40-50, AISI 304, AISI 316
5	Bolt	8.8, A2
6	Gland Seat	EPDM, NBR
7	Gland Seat	ST 37
8	Gland	GGG 50
9	Setscrew	8.8, A2
10	Washer	ST 37, A2
11	Nut	8.8, A2
12	Stem Nut	BRONZE
13	Stem	1.4021 (X20Cr13)
14	Bridge	ST 37
15	Bolt	8.8, A2
16	Bushing	BRONZE
17	Bolt	8.8, A2
18	Hand Wheel	GG 25
19	Pin	1.2210 (115CrV3)

Subject to change without notice,  
 Please contact us for other sizes and materials.  
 Part No: 37 - 2341

REV:0 02.04.2019



DN	A	B	C	ØD	FF	PN 10		
						Øk	Ød(depth) x n	Ød1 x n1
50	70	116	195	230	43	125	M16 (10mm) x 2	Ø19 x 2
65	80	120	205	230	46	145	M16 (19mm) x 2	Ø19 x 2
80	95	142	227	260	46	160	M16 (19mm) x 2	Ø19 x 6
100	115	140	255	260	52	180	M16 (19mm) x 2	Ø19 x 6
125	118	152	284	260	56	210	M16 (19mm) x 2	Ø19 x 6
150	135	170	355	335	56	240	M20 (19mm) x 2	Ø23 x 6
200	165	213	416	400	60	295	M20 (20mm) x 2	Ø23 x 6
250	190	233	470	400	68	350	M20 (22mm) x 4	Ø23 x 8
300	221	300	530	600	78	400	M20 (24.5mm) x 4	Ø23 x 8
350	257	335	660	600	78	460	M20 (24.5mm) x 6	Ø23 x 10
400	284	400	720	600	102	515	M24 (24.5mm) x 6	Ø28 x 10
500	332	470	855	600	127	620	M24 (26.5mm) x 8	Ø28 x 12
600	385	558	1105	800	154	725	M27 (30mm) x 8	Ø31 x 12
700	450	645	1085	800	165	840	M27 (32.5mm) x 10	Ø31 x 14
800	513	750	1170	700	190	950	M30 (35mm) x 24	-
1000	615	950	1625	1000	216	1160	M33 (40mm) x 12	Ø37 x 16
1200	730	1200	2300	1200	254	1380	M36 (45mm) x 12	Ø41 x 20

Subject to change without notice, Please contact us for other sizes and materials.  
 Part No: 37 - 2308

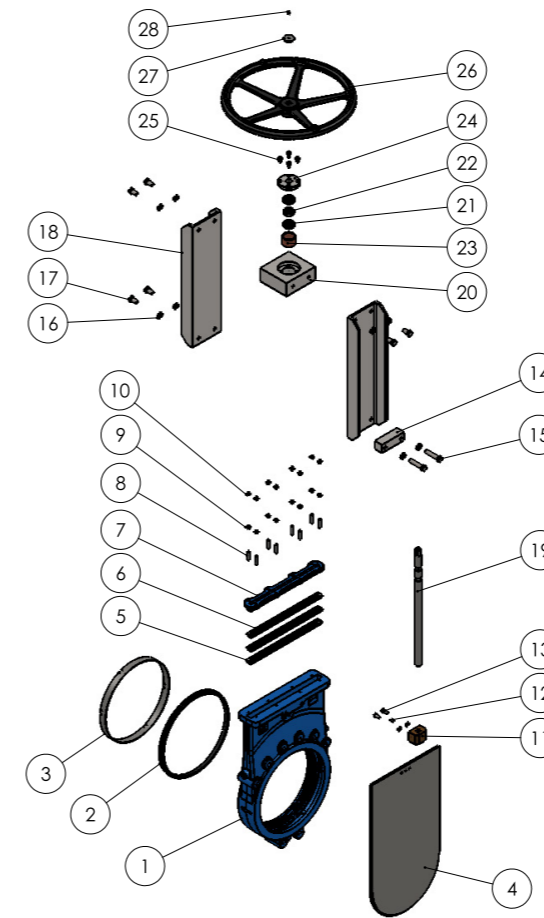
REV:0 03.12.2019

Type 7400 is a uni-directional (one way flow) valve to be used for fibrous fluids such as water treatment. Tightness is assured with the elastomer (EPDM, NBR, NR) and metal seal. Actuation types are with gear box, handwheel, chainwheel and pneumatic or electrical. It has rising and non-rising stem alternatives

Asteknik Valve Type : 7400  
 Valve Type : Knife Gate Valve  
 DN/NPS : DN 50 – DN 800 / 2" – 32"  
 Flange Connection : PN 10, PN 16  
 Operating Pressure : 4-6 Bar  
 Flange Standard : EN 558 Serie 20  
 Test Standard : EN 12266-1

# 7400

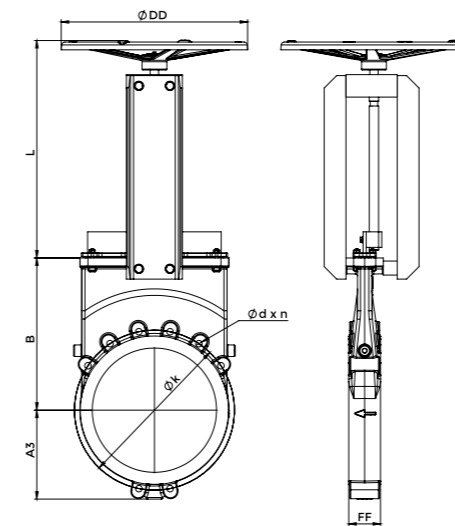
UNI-DIRECTIONAL  
KNIFE GATE VALVE



### DN 50 - 800

P.NO	PART NAME	MATERIAL
1	Body	GGG 40-50, AISI 304, AISI 316
2	Seat	EPDM
3	Retaining Ring	AISI 304, AISI 316
4	Knife	AISI 304, AISI 316
5	Gland Seat	EPDM
6	Packing	PTFE
7	Gland	GGG 40-50, AISI 304, AISI 316
8	Setscrew	8.8, A2
9	Washer	St 37, A2
10	Nut	8.8, A2
11	Spindle nut	CuSn12
12	Pin	1.4021
13	Bolt	8.8, A2
14	Bracket	St 37
15	Bolt	8.8, A2
16	Washer	8.8, A2
17	Bolt	8.8, A2
18	Bridge	St 37
19	Move Screw	1.4021
20	Bridge Top Plate	St 37
21	Bearing	-
22	Washer	1.4021
23	Bushing	CuSn12
24	Cover	St 37
25	Bolt	8.8, A2
26	Handwheel	GG25
27	Washer	St 37
28	Bolt	8.8, A2

REV:0 20.01.2020  
 Subject to change without notice,  
 Please contact us for other sizes  
 and materials.  
 Part No: 37-2345



DN	A3	B	L	Ø DD	FF	PN 10			PN 16		
						Ø k	d	n	Ø k	d	n
50	59,2	105	209	230	43	50	59,2	105	125	M16	8
65	66,3	125	224	230	46	65	66,3	125	145	M16	8
80	88,9	135	239	230	46	80	88,9	135	160	M16	8
100	102,8	155	256	230	52	100	102,8	155	180	M16	8
125	116,7	180	296	230	56	125	116,7	180	210	M16	8
150	134,2	175	310	230	56	150	134,2	175	240	M20	8
200	158,4	245	401	335	60	200	158,4	245	295	M20	12
250	196,2	280	458	335	68	250	196,2	280	355	M24	12
300	215,5	345	504	400	78	300	215,5	345	410	M24	12
350	259,3	350	661	400	78	350	259,3	350	470	M24	16
400	290	490	710	600	102	400	290	490	525	M27	16
500	359	495	721	600	127	500	359	495	650	M30	20
600	422	595	995	800	154	600	422	595	770	M33	20
700	464	771	1065	800	165	700	464	771	840	M33	24
800	533	920	1205	800	190	800	533	920	950	M36	24

Subject to change without notice Please contact us for other sizes.  
 Part No: 37 - 2351

REV:0 22.01.2020



**ASTEKNIK MAKİNE SAN. VE TİC. A.Ş.**

**Address:** Mustafakemalpaşa Organize Sanayi Bölgesi  
3.Sok. No:3 16500 Mustafakemalpaşa BURSA-TURKEY

**Phone:** +90 (224) 632 62 60 / +90 (224) 443 33 88

**Fax:** +90 (224) 632 62 67 / +90 (224) 441 07 19

**E-Mail:** export@asteknikvana.com

**www.asteknikvana.com**

